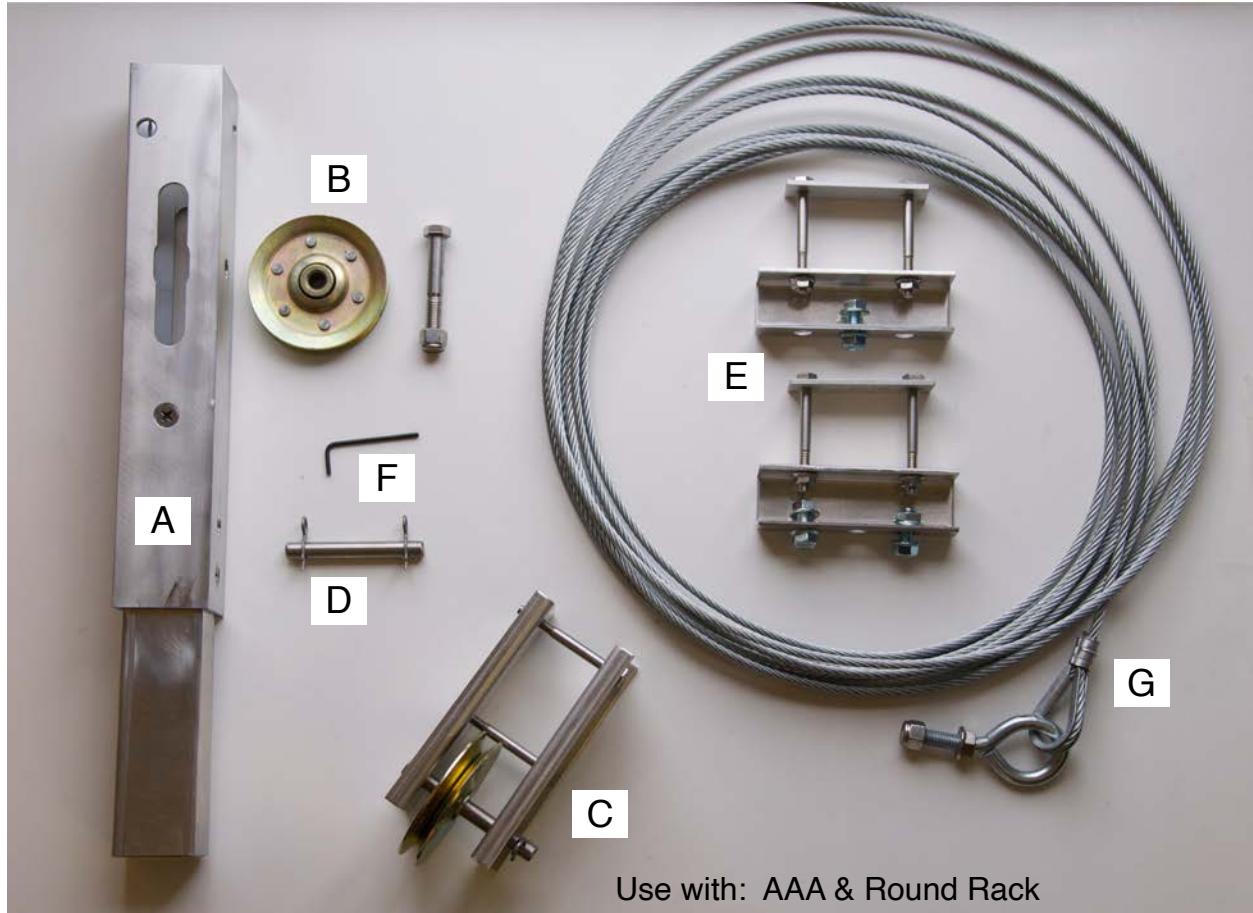


Convert A Rack®



Parts

- A) Extension Piece. Has slot, splice and various drilled holes.
- B) 3 inch pulley with $\frac{3}{8}$ " stainless bolt with lock nut
- C) 2 inch pulley guide
- D) Stop pin with stainless hitch pins
- E) Winch Brackets. One unit with 4 bolts and nuts the other with three
- F) Allen wrench
- G) Stainless Cable
- H) D&L Brake Winch (optional)

Tools Needed

- 7/16" box wrench
- 9/16" box wrench
- 1/2" box wrench
- File
- WD-40

Convert A Rack®

Begin by removing the gourds from your hub. With the aid of a helper remove pole and hub from ground stake and place over an upturned 33 gallon or larger trash can. Lean the upper section on the trash can.

Remove the rope and pulley and the eyebolt that connects to the angle arm near the hub. Use your 9/16" box wrench to remove both eyebolts; one from the top of the pole the other at the angle. You won't be using any of these parts so they can be discarded.

Remove the pole cap from the pole. If it doesn't wiggle off you can use a flat headed screw driver and pop it off, set aside.

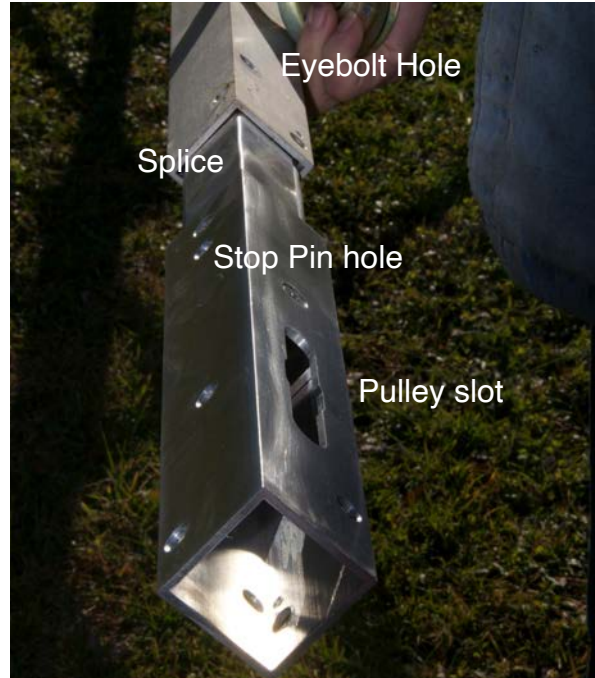
Remove the top perch rods using the allen wrench provided (F). Loosen and remove the set screws from the drilled and tapped holes. You will be reusing these set screws and top perch rods.

Before we can insert the extension piece (A) we will need to remove all the burrs from inside the top of the existing pole. Using a flat file run the file around the edges of the top of the pole, then insert the file into the pole and make sure that the original eyebolt and top perch holes are de-burred and clean.



Spray a bit of WD-40 onto the splice end of the extension piece (A). You will need to insert the splice so that the side that has the slotted opening (see next photo) will be on the same side as the eyebolt hole that is on the hub (see next photo).

You can now replace the top perch rods and pole cap into the extension piece.



Next we will place the pulley into the milled slot. Holding the edge of the pulley slip it into the milled slot. Align the center of the pulley to the holes drilled thru the pole. Place the 3/8" bolt thru the pole, pulley and out the opposite end of the pole. Thread on the lock nut, but don't tighten yet.

Now we want to insert the stop pin. Remove one of the inserted hitch pins, place the pin in the hole below the pulley slot. Replace the hitch pin.

Unwrap the cable and lay it out. Attach the eyebolt with nuts into the hole on the angle which is attached to your hub. Remove only the lock nut from the bottom of the eyebolt, slip the eyebolt into the hole, and replace the lock nut and tighten. Use a 9/16" wrench on the lock nut and use another open end



Convert A Rack®

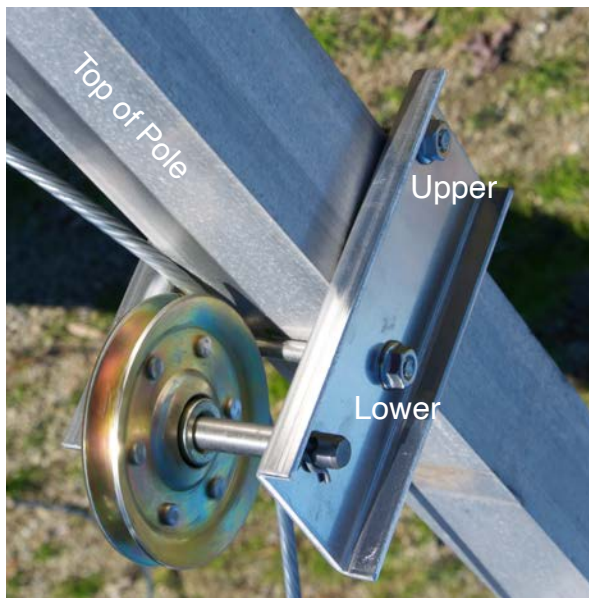
wrench to hold the eyebolt in place. Tighten the lock nut all the way to the angle.

Run your cable up the pole to where the 3 inch pulley is. Place the stop nut end of the cable thru the top of the pulley and milled slot. If the cable is a tight fit, you can remove the pulley by removing the bolt and nut and then place the cable, then the pulley and replace the bolt. Once the cable is in place be sure to tighten the bolt and nut that hold the pulley in place. Make sure the lock nut is tightened all the way to the pole.

Flip the pole over because we want to insert the cable inside the hub, between the hub and the pole. The cable must go thru the center and be in between any glide buttons found on your hub. It may take a few tries till the cable comes out where needed. Once the cable is thru the hub pull on the cable and remove the slack.

We are going to continue to work on this side of the pole. First we want to remove the rope winder. Use your 7/16" wrench to loosen the bolt and nut. You wont be using the rope winder any more, it is aluminum and can be recycled or you can keep it for another project.

It is time to install the 2 inch pulley guide on to the pole. The pulley guide is assembled. Notice that one of the bolts behind the pulley is low and one is high. You want to place the



pulley guide on the pole so that the lower bolt is butted against the pole. Remove the nut from the higher bolt, pull the pulley guide open and slip the entire pulley guide over the pole. Insert the bolt and nut and tighten. Make sure the pulley guide is level using a square.

The cable will then slip behind the pulley and in front of the bolt that butts up against the pole.

Winch brackets and winch. When assembling the winch brackets to the winch then onto the pole, you will want the winch brackets with face the ground.



It is much easier to attach the winch brackets first to the winch then the entire assembly on to the pole. The small bolts on the brackets will align with the holes found on the D&L brake winch. If using another brand name brake winch, you may need to drill the winch to match the bracket.

Install the entire winch with brackets onto the pole, about 6" below the pulley guide. A second person holding the winch assembly while you install the unit will make it much easier. Install the winch handle according to the directions found with the winch.

It's now time to attach the cable to the brake winch. We have installed a stop nut on to the end of the cable. Insert the end of the cable with the stop nut into the OVAL hole on the gear side of the brake winch (see photos on page 4). Insert the stop nut from the inside

Convert A Rack®



of the winch so that it goes thru the oval hole and out. Turn the cable so that stop nut is horizontal to the hole and when you pull on it it won't come back out thru the oval hole. Attach the handle of the winch following the instructions provided with the brake winch. Once the cable is on remove any slack in the cable. Stand your pole up and have your helper hold the pole. You will be placing the entire unit back over your ground stake but before you do so make sure that the hub is up high enough on the pole so that as you lower the unit over the ground stake it won't bonk you on the head. Use your helper as it will take both of you to raise the entire unit.

IMPORTANT!!! There is a 50 pound minimum load with the winch. You must put your gourds on before raising or lowering the hub.



When raising your hub, stop when you feel the hub hit the stop pin. Never over tighten the winch. It places too much stress on the entire unit.



Troyer's Birds' Paradise
20785 Morris Rd
Conneautville Pa 16406
814-587-2756